

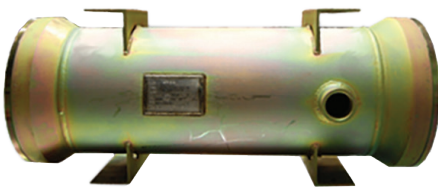
3240 Air Separation Membrane



OVERVIEW

Air Liquide Advanced Separations (ALaS) 3240 are high performance, hollow fiber membrane module offering excellent productivity per module volume. The 3240 is designed specifically for applications where N₂ flow is more critical than recovery efficiency.

VESSEL PHOTO



OPERATING CHARACTERISTICS

MAXIMUM OPERATING TEMPERATURE	65°C (149°F)
MAXIMUM OPERATING PRESSURE	13 barg (190 psig)
RECOMMENDED INLET AIR CONTENT	< 5 µg/Nm ³
NITROGEN MOISTURE CONTENT	< -70°C (-95°F) Dew Point

PHYSICAL CHARACTERISTICS

WEIGHT (MODULE ONLY)
29.4 kgs (65 lbs)

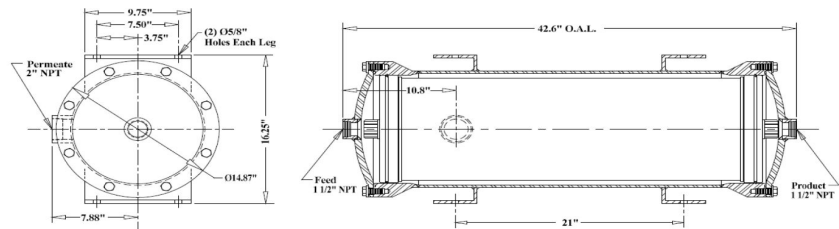
WEIGHT (MODULE AND VESSEL)
159 kgs (350 lbs)

VESSEL MATERIAL
Zinc chromate (yellow) plated carbon steel, stainless steel optional

END PLUG MATERIAL
6061-T6 Aluminum

CENTER TUBE MATERIAL 6061-T6 Aluminum

DIMENSIONS



Product specifications are for reference only. Contact MEDAL for further information.

Air Liquide Advanced Separations
305 Water St
Newport, DE 19804
TELEPHONE: +1 302-225-1100
EMAIL: usalat-alas@airliquide.com
www.airliquideadvancedseparations.com

PERFORMANCE DATA

Pressure (Barg)	Temp 40°C	Purity (%)						
		95	96	97	98	99	99.5	99.9
		Nitrogen Flow (Nm ³ /hr) / Feed air Flow (Nm ³ /hr)						
6		105/231	88/213	73/196	57/179	39/157	29/143	15/127
7		130/279	109/257	90/236	70/214	49/187	35/170	18/150
8		156/328	131/302	108/276	84/250	58/217	42/197	22/173
9		182/378	153/347	126/316	98/286	68/248	49/225	25/196
10		209/428	176/392	144/357	113/322	77/278	56/252	29/219
11		236/479	199/438	163/398	127/358	87/309	63/279	33/242
12		264/530	222/484	182/440	142/395	97/340	70/307	36/265
13		291/581	245/530	200/481	157/432	107/371	78/334	40/288

All values are based on mid aged condition (10,000 to 15,000 operating hours)